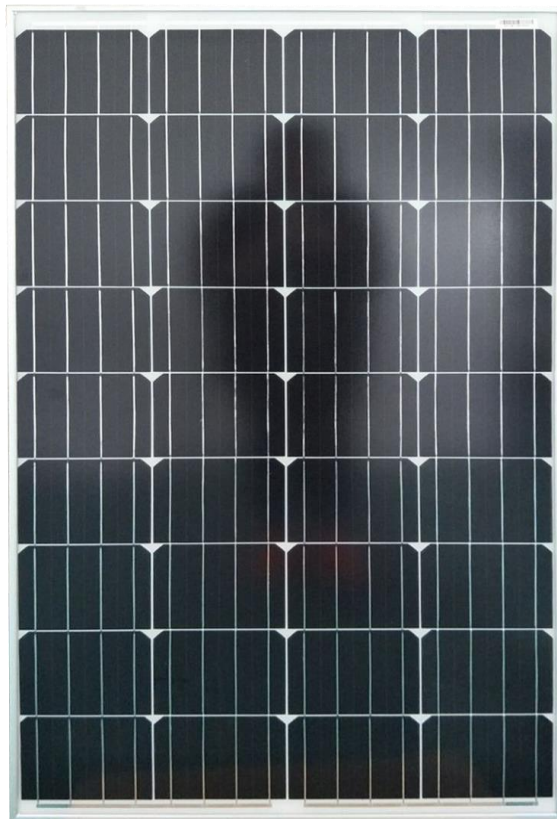


All-Purpose Module

RSM is a robust solar module with 36 solar cells. These modules can be used for on-grid solar applications. Our meticulous design and production techniques ensure a high-yield, long-term performance for every module produced. Our rigorous quality control and in-house testing facilities guarantee Resun Solar's modules meet the highest quality standards possible.



Monocrystalline Silicon Solar Modules

Features



High module conversion efficiency (up to 15.43%), through superior manufacturing technology



Guaranteed 0- +5W positive power output tolerance ensures high reliability



Anti-reflective, hydrophobic coating improves light absorption and reduces surface dust



Excellent performance under low light environments (mornings, evenings and cloudy days)



Entire module certified to withstand high wind loads (2400 Pascal) and snow loads (5400 Pascal)*



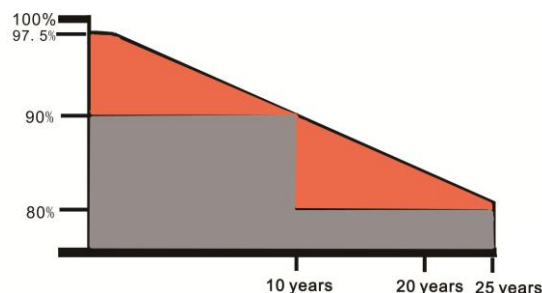
All-purpose Module

Sales network covers more than 20 countries, providing customers with instant after sales service and an efficient supply-chain, our clients can be found throughout the world, such as North America, Europe, Oceania, Eastern Europe, East Asia, Middle Easter and Africa etc. Resun Solar team works closely with our customers to provide them with solutions for all their solar needs.



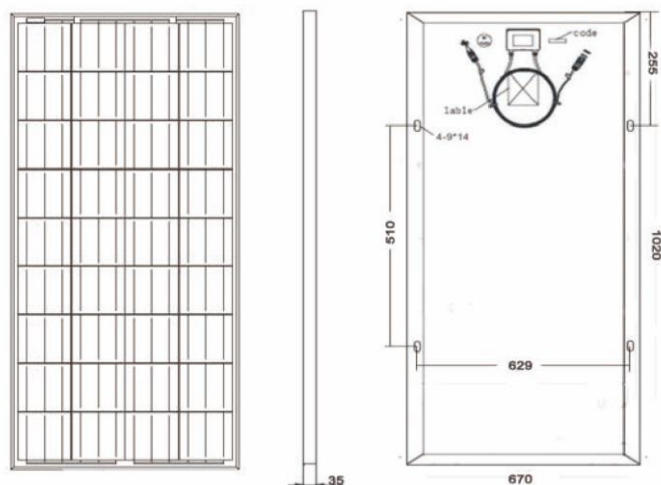
Resun reputation is founded on more than 500MW of high performance solar modules installed around the world.

Industry-leading warranty



- 25 year transferable power output warranty:10year/90%;25year/80%.
- Based on nominal power.
- 10 year material and workmanship warranty.

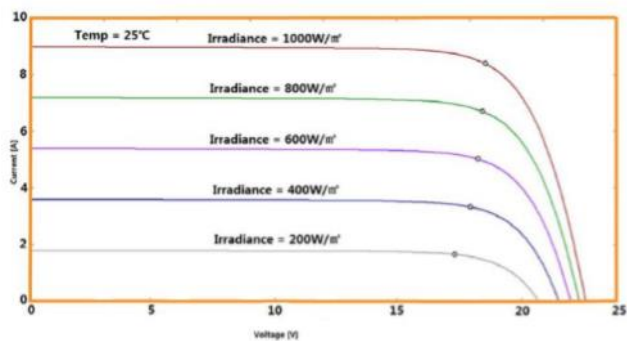
RSM100M



Electrical Data

STC	RSM100M
Nominal Maximum Power(Pmax)	100W
Optimum Operating Voltage(Vmp)	18.90V
Optimum Operating Current(Imp)	5.56A
Open CIRCUIT voltage(Voc)	22.1V
Short Circuit Current(Isc)	6.1A
Operating Temperature	-40°C~+85°C
Maximum System Voltage	1000V(IEC)/600V(UL)
Maximum Series Fuse Rating	15A
Application Classification	Class A
Power Tolerance	0 ~ +5W

IV-Curves



Temperature Characteristics

Nominal Operating Cell Temperature (NOCT)	45±2°C
Temperature Coefficient of Pmax	-0.43%/°C
Temperature Coefficient of Voc	-0.34%/°C
Temperature Coefficient of Isc	0.065%/°C

Mechanical Data

Cell Type	Mono-crystalline 156.75 x104 mm,4/5 Bus bars
Cell Arrangement	36(4x9)
Dimensions	1020*670*35MM
Weight	9.0kg
Front Cover	3.2mm Tempered Glass
Frame Material	Anodized Aluminum Alloy
J-BOX	IP67
Cable	4mm2(IEC)/12AWG(UL),1150mm
Connectors	MC4 or MC4 Comparable
Standard Packaging (Modules per Carton box)	2pcs
Module Pieces per container (40HQ)	2000pcs (40'HQ)

Packing Configuration

Container	20'GP	40'HQ
Pieces	1200	2000

Resun Solar Energy Co.,Ltd

Add:No 15 Puzhuang Avene,Wuzhong District,Suzhou,
Jiangsu China.

Tel: +86 0512 66292101

Fax: +86 0512 66293858

E-mail: teri.wang@resunsolar.com

<http://www.resunsolar.com>