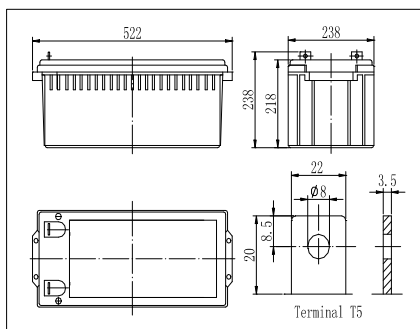


MT122050G
12 Volts 205Ah



MT122050G having its design life of 12 years @ 20°C for floating application and more than 2000 cycles for 30% depth of discharge for cyclic application.

As our product were all rechargeable, highly efficient, maintenance free & leakage proof usable in all positions and it meets the standards of JISC, BS, DIN, IEC etc.

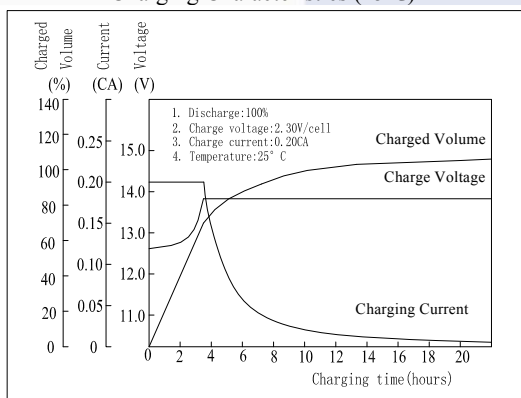
We're ISO9001certified &UL approved as well as CE

Our containers were all ABS resin and grades were: UL94-HB, UL94V-0 & UL94V-2 (flame retardant types could be arranged).

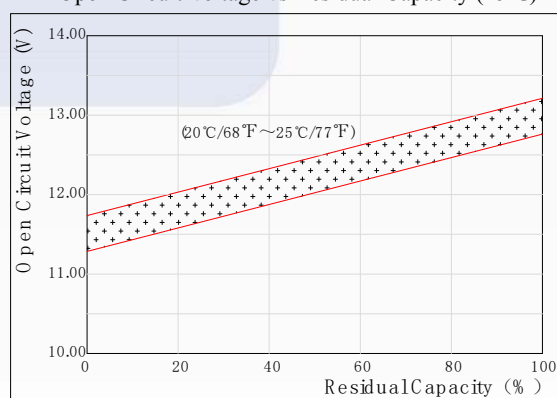
Specification

Nominal voltage	12 Volts
Capacity	205 Ampere hours @ 20°C, 10 hours rated (cut off voltage 1.80V/Cell)
Dimension	L: 522 mm W: 238 mm H: 218 mm TH: 238 mm
Weight approx.	60 kg or 132 pounds
Internal resistance	Approx. 3.8 mΩ
Self-discharge rate	< 3% per month @ 25°C
Operation temperature range	Discharged: -15°C to 60°C
	Charging: 5°C to 60°C
	Storage: 0°C to 60°C
Floating charge voltage	13.50 to 13.80 Volts (-15mv / °C)
Cyclic charging voltage	14.10 to 14.40 Volts (-20mv / °C)
Maximum charging current	50 Ampere (A)
Boost/equalizing charge	Not required
Terminal type	Copper
Container material	General ABS resin

Charging Characteristics (25°C)



Open Circuit Voltage vs Residual Capacity (25°C)



Constant Current Discharge Characteristics (A, 25°C)

FV/TIME	5min	10min	15min	30min	60min	3h	5h	10h	20h
9.60V	432	330	304	196	124	48.7	33.3	20.3	10.5
10.20V	410	314	292	188	119	48.0	32.8	20.1	10.4
10.80V	386	295	277	179	113	47.0	32.1	20.0	10.3

Constant Power Discharge Characteristics (Watt, 25°C)

FV/TIME	5min	10min	15min	30min	60min	3h	5h	10h	20h
9.60V	4536	3564	3338	2199	1414	573	394	242	125
10.20V	4309	3386	3204	2111	1357	564	388	240	124
10.80V	4051	3183	3044	2006	1289	553	380	239	124